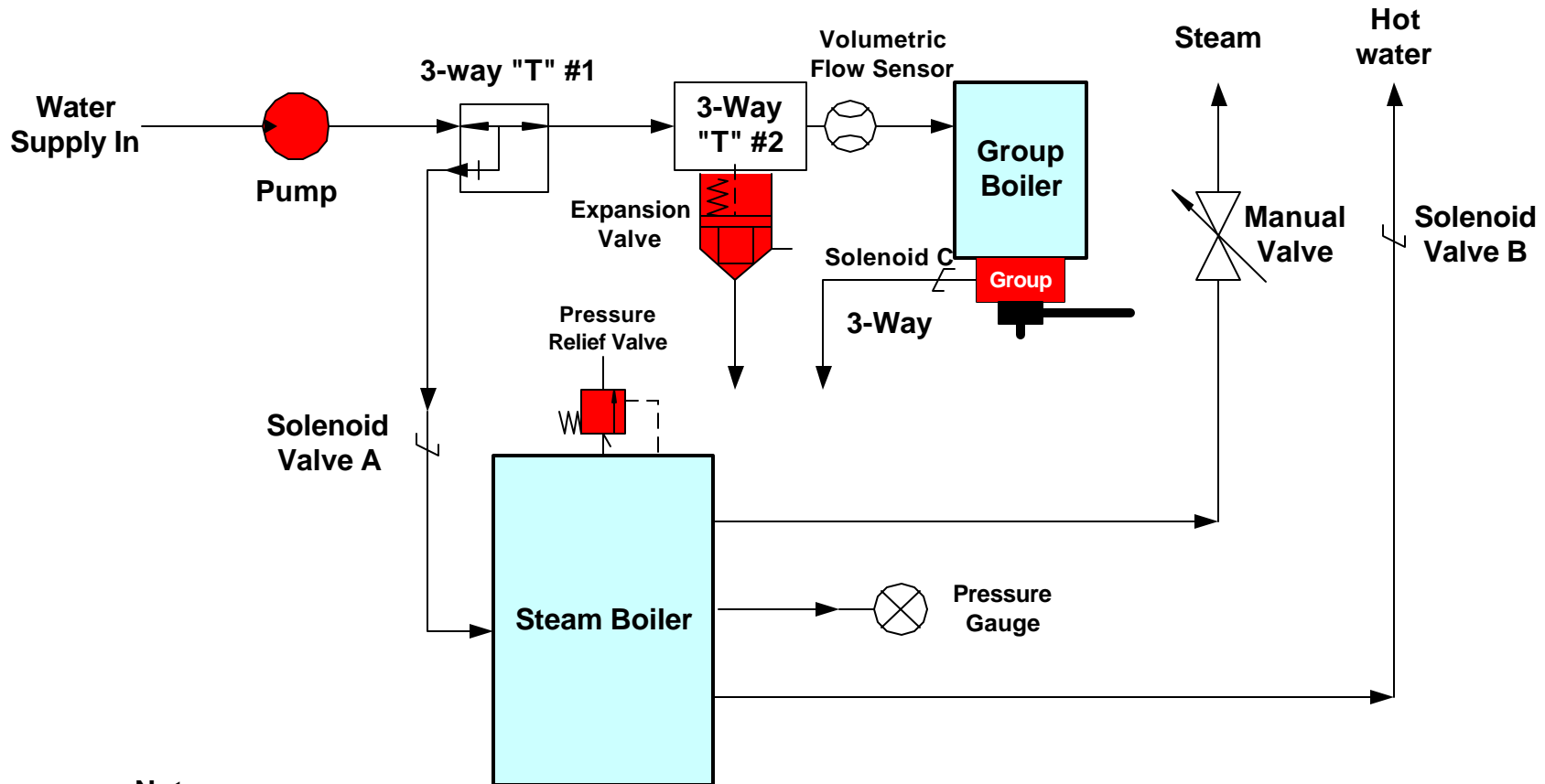


LaSpaziale S1 Water Flow Diagram



Notes:

- 1) The pump does not block water flow when it is not running. When the pump is off, street water pressure remains at the pump outlet. This means that water pressure is constantly applied through 3-way T #1, through 3-Way T #2, and into the group boiler. However, refill of the steam boiler requires activation of Solenoid Valve A which occurs in response to the water level sensor inside the Steam Boiler.
- 2) A properly adjusted expansion valve should open >12bar. This situation might arise if the pump pressure is too high and has insufficient flow through the group or if the group boiler pressure gets too high even when the pump is off.
- 3) The two Three Way "T" connectors allow water to flow into one port and out the other two much like the "Y" connectors used on garden hoses to connect two hoses to one spigot.
- 4) The Volumetric Flow Sensor sends a signal to the computer controller board so it can sense the pre-programmed flow to the group and shut off the pump when the correct amount of water has been delivered.